

# CIVIL ENGINEERING & GROUNDWORKS

Chartway Civil Engineering



Unit F1, East Court,  
South Park Business Village  
Enterprise Road  
Maidstone, Kent  
ME15 6JF

Tel: 01622 740140  
[enquiries@chartwaycivilengineering.co.uk](mailto:enquiries@chartwaycivilengineering.co.uk)





---

# About us



## Residential and commercial projects

CCE is a Kent-based civil engineering company, with a wealth of experience working on residential and commercial projects, with contract values ranging from £100,000 to £15m. We employ over 100 staff, across both commercial and operations sides of the business. Our turnover for the year 2017/18 was £11m, with £20m projected in the period 2018/19.

The company was initially formed to serve Chartway Group. This has meant the company has been able to grow quickly and sustainably, recruiting skilled staff both on the commercial and operations sides of the business. Moreover, we benefit from the training expertise and organisation the Group brings, meaning key competencies are kept up-to-date and skills are regularly reviewed.



# Investment in plant and equipment

Investment in plant and equipment is one of our continual focuses. We own a fleet of mechanical plant from 3t to 13t excavators, 6t and 9t dumpers, and selected small tools. We are continually updating our fleet with innovative, state-of-the-art machinery.

As a company we believe sustainable growth will be achieved using our strategic investment plan in items of plant and machinery essential to our operations.



Investment in  
plant and  
equipment is a  
continual  
strategic focus

# Health, Safety and the Environment

## Policy and Planning

CCE's commitment to Health and Safety goes further than just compliance with legal obligations. Health and Safety is an integral part of our procedures. We have built our Health and Safety Management system around the framework of HSG65. The Plan, Do, Check, Act model assists us in ensuring we plan and manage risk and learn from each stage of the project.

## Training

Works are carried out by employees holding the requisite training and competences for the work to be undertaken. All site employees hold CSCS/CPCS certification. Our training matrix identifies specific employee needs and are based on company and site operational requirements. These include trade skill and vocational training standards and for managers to hold SMSTS. Our fully maintained database of all training needs with an auto-countdown facility enables our managers to identify when competencies are due to expire. This enables the company to be proactive in arranging for recertification events to take place, maintaining staff competence in these skill areas. The company also holds a regime of tool box talks and team briefings.

## Auditing Protocol

All CCE management processes and sites are subject to a rigorous audit process.

The objective of the CCE audit process is to assist in the measurement of HS&E performance and to ensure that the planning, implementation, preventative, corrective and reviewing of work practices is being carried out in accordance with both legislative and CCE's Health, Safety and Environmental Policies and Standards.

Findings of audits are reviewed by senior management to satisfy themselves that any major issues or improvements identified are actioned within the designated time scales. Senior Management also carry out site workplace inspections to demonstrate their commitment to the workforce and CCE's policies and procedures.

## Reporting

All site teams are encouraged to report both good practice and bad practice.

## Learning Lessons

Reducing accidents and incidents by investigation, analysis and implementing lessons learnt following the review process.



A commitment  
beyond  
compliance with  
legal obligations



# Company Structure



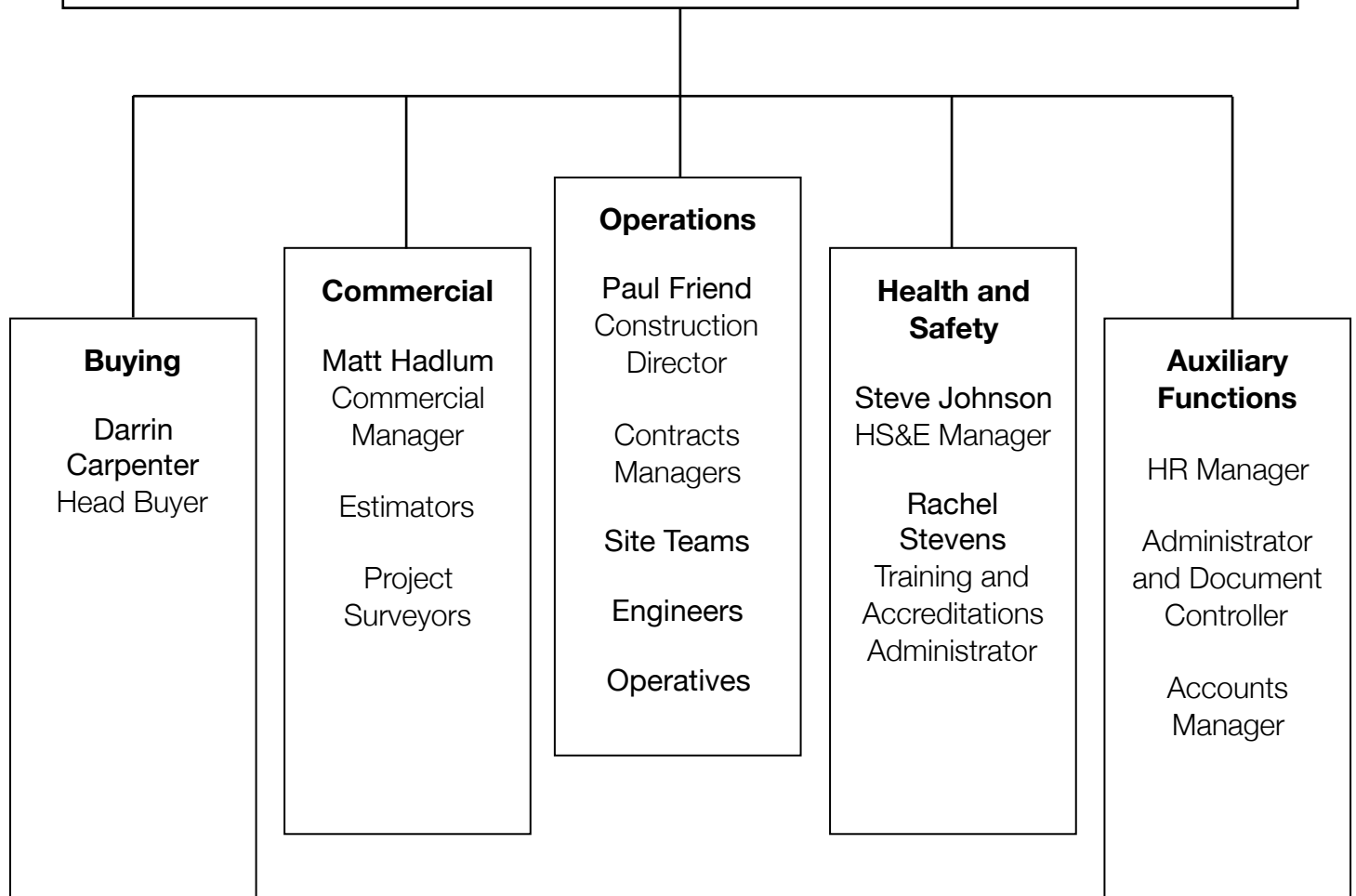
## Keith Lamb Managing Director

klamb@chartwaycivilengineering.co.uk

Tel: 01622 740140

Keith has been Managing Director of CCE since 2016, focusing on building the company to both support Chartway Group with their civil engineering requirements, as well as developing CCE to also serve external clients. Since taking on the role, the company is now working on projects ranging from £150k - £15m.

Keith started his career as a Site Engineer with a groundwork contractor in 1998, after graduating from the Southampton Institute. In 2000, he moved into a commercially focused role with GSE as a Quantity Surveyor and quickly progressed in his career to become a Commercial Manager with O'Keefe. After a period of time, Keith then returned to work for GSE as Commercial Director. He is now responsible for the overall management of CCE and ensuring it continues to expand into new markets as well as serve the civil engineering requirements of Chartway Group.



# FEATURED PROJECTS

---





# Cross Street

Residential project, completed 2018



Cross Street was a project involving the construction of 50 new dwellings spread over two sites in The Brook regeneration zone in Chatham, Kent.

CCE provided the groundworks for the project which entailed site clearance, retaining walls, infrastructure, sub-structures and external works. The works were completed in 2018.



Sector	Residential
Contract Value	£500k
Main Contractor	Chartway Construction
Duration	18 months
Type of works	Groundworks



CHARTWAY CIVIL ENGINEERING



# Conningbrook Lakes

Ongoing Project, expected completion December 2022



Conningbrook Lakes is a development situated near Ashford, Kent. The 300 residential units on the site are being constructed over 5 years, and will be comprised of 2,3,4 and 5-bedroom houses. Works began early 2018 and include an extensive cut and fill strategy, sheet piling, land reclamation from two lakes, infrastructure, adoptable drainage, service installations, piled foundations, blockwork to substructures with beam and block floor, domestic drainage, Section 278 Highway works and a high specification external works package.



Sector	Residential
Contract Value	£15m
Main Contractor	Chartway Construction
Duration	5 years
Type of works	Groundworks



CHARTWAY CIVIL ENGINEERING



# Linden Farm

Ongoing Project, expected completion November 2019



Linden Farm is a development of 74 units, including 21 Shared Ownership and 53 Affordable Rented homes.

CCE commenced works on site early 2018 which included site clearance, infrastructure, substructures beam and block floor including a mix of traditional and piled foundations, internal drainage works, S278 Highway works and external finishes. Works are due to be complete in late 2019.



Sector	Residential
Contract Value	£3m
Main Contractor	Chartway Construction
Duration	2 years
Type of works	Groundworks



CHARTWAY CIVIL ENGINEERING



# Peters Village

Ongoing Project, expected completion November 2019



Situated on the east bank of the River Medway in the Tonbridge and Malling Borough, Peters Village is a residential site which will be comprised of 1000 homes and span 210 acres when completed. CCE are currently working on a 104 dwelling project within this.

CCE are currently undertaking the groundworks on the site including, substructures, a mix of traditional foundations and RC raft slabs, infrastructure, domestic drainage and external works. Works are due to be completed late 2019.



Sector	Residential
Contract Value	£3.5m
Main Contractor	Chartway Construction
Duration	2 years
Type of works	Groundworks



CHARTWAY CIVIL ENGINEERING



# Jemmett Road

Ongoing Project, expected completion July 2020



Jemmett Road is a residential development located in South Ashford, which will provide 160 new homes when completed.

The site was a former college building which had to be demolished in phases in line with Ashford College's relocation. The site needed to be remediated before earthworks and infrastructure work could begin in early 2018. Works to Phase 1 are now well underway with CCE carrying out the substructures, domestic and adoptable drainage, Section 278 Highway works and external finishes.



Sector	Residential
Contract Value	£7m
Main Contractor	Chartway Construction
Duration	2.5 years
Type of works	Groundworks



CHARTWAY CIVIL ENGINEERING



---

# Heron Fields

---

Ongoing Project, expected completion March 2019



Heron Fields is a large development located in Sittingbourne, Kent. CCE were appointed the groundworks contracts for Parcels, F, G and H. Work on Parcel H commenced early 2017 with F & G following on later that year. Completion is due in Spring 2019. All of the phases together will provide 333 new homes.

Works included cut and fill earthworks, substructures, infrastructure, drainage, service installations and external works.



Sector	Residential
Contract Value	£5m
Main Contractor	Chartway Construction
Duration	2.5 years
Type of works	Groundworks



CHARTWAY CIVIL ENGINEERING



# Passmore Green

Completed 2018



Passmore Green is a development of 35 new build homes in the popular residential area of Tovil, Maidstone. The project is comprised of 2 and 3 bedroom terraced homes.

CCE oversaw these works which included site clearance, infrastructure, a piled raft foundation solution, domestic drainage, S278 works and externals. Works were completed early 2018.



Sector	Residential
Contract Value	£500k
Main Contractor	Chartway Construction
Duration	18 months
Type of works	Groundworks



CHARTWAY CIVIL ENGINEERING



# Northview

Completed 2018



Northview is a development of 31 units for the over 55s. Chartway Construction began work on the site in late 2016, with CCE overseeing groundworks including, earthworks, substructures, infrastructure and external works. The works were completed in Spring 2018.



Sector	Residential
Contract Value	£500k
Main Contractor	Chartway Construction
Duration	18 months
Type of works	Groundworks



CHARTWAY CIVIL ENGINEERING



# CONTACT US TODAY

---



**Chartway Civil Engineering**  
Unit F1, East Court,  
South Park Business Village  
Enterprise Road  
Maidstone, Kent  
ME15 6JF

**Tel: 01622740140**  
**[enquiries@chartwaycivilengineering.co.uk](mailto:enquiries@chartwaycivilengineering.co.uk)**

Copyright © Chartway Civil Engineering, 2018  
Company No: 10401411 VAT Reg No: 296823848